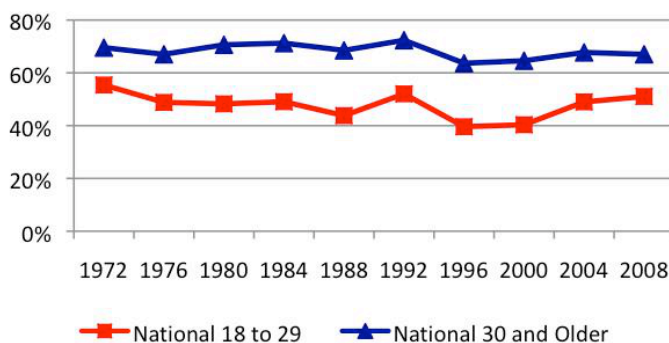


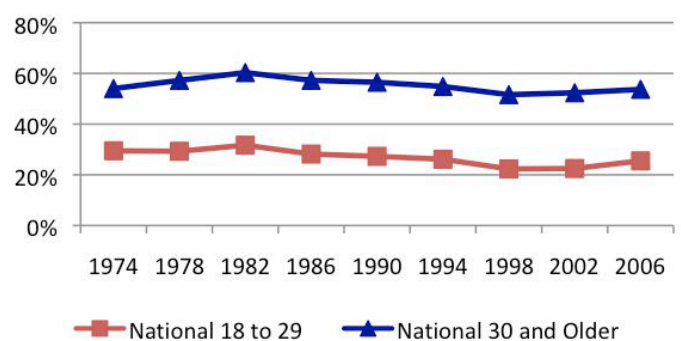
Quick Facts: Voting in Presidential and Midterm Elections by Age

When compared to Presidential elections, midterm elections have consistently seen a significant drop off in voter turnout, especially for young people (see Graph 1 and 2). In 2008, adults age 30 and older had a national turnout of 67%, one percentage point less than the 2004 election. Youth voter turnout (18-29) was 51%, approximately 16 percentage points lower than the 30 and over turnout – slightly less than the 19 percentage point gap seen in the 2004 elections. Nationally, youth voter turnout in 2006 was 26%, whereas voter turnout for the 30 and over population was 54%. Turnout among 18-to-29 year-olds increased by three percentage points between 2002 and 2006 while turnout among voters age 30 and above only increased by one point between the two elections. Nationally, in 2006 youth voter turnout was about 28 percentage points lower than the adult voter turnout rate. This is slightly less than the 30 percentage point gap between the youth and adult voter turnout in the 2002 midterm election.¹

Voting in Presidential Elections by Age



Voting in Midterm Elections by Age



| | 1992 | 1996 | 2000 | 2004 | 2008 | | 1994 | 1998 | 2002 | 2006 |
|-------|------|------|------|------|------|--|------|------|-------|-------|
| 18-29 | 52% | 40% | 40% | 49% | 51% | | 26% | 22% | 22.5% | 25.5% |
| 30+ | 72% | 64% | 65% | 68% | 67% | | 55% | 52% | 52% | 54% |

¹ Data from Graphs 1 & 2 and from Table 1 come from the US Census, Current Population Surveys, November 1972-2008.